

/ go 36 



Courbes de charges

Lastkurven

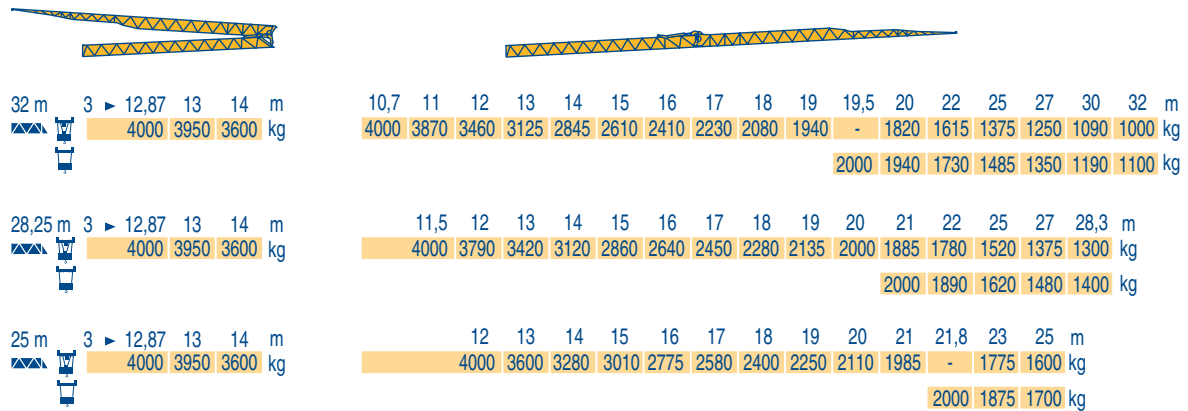
Load diagrams

Curvas de cargas

Curve di carico

Curva de cargas

LXS 1



Flèche relevée

Ausleger in Steilstellung

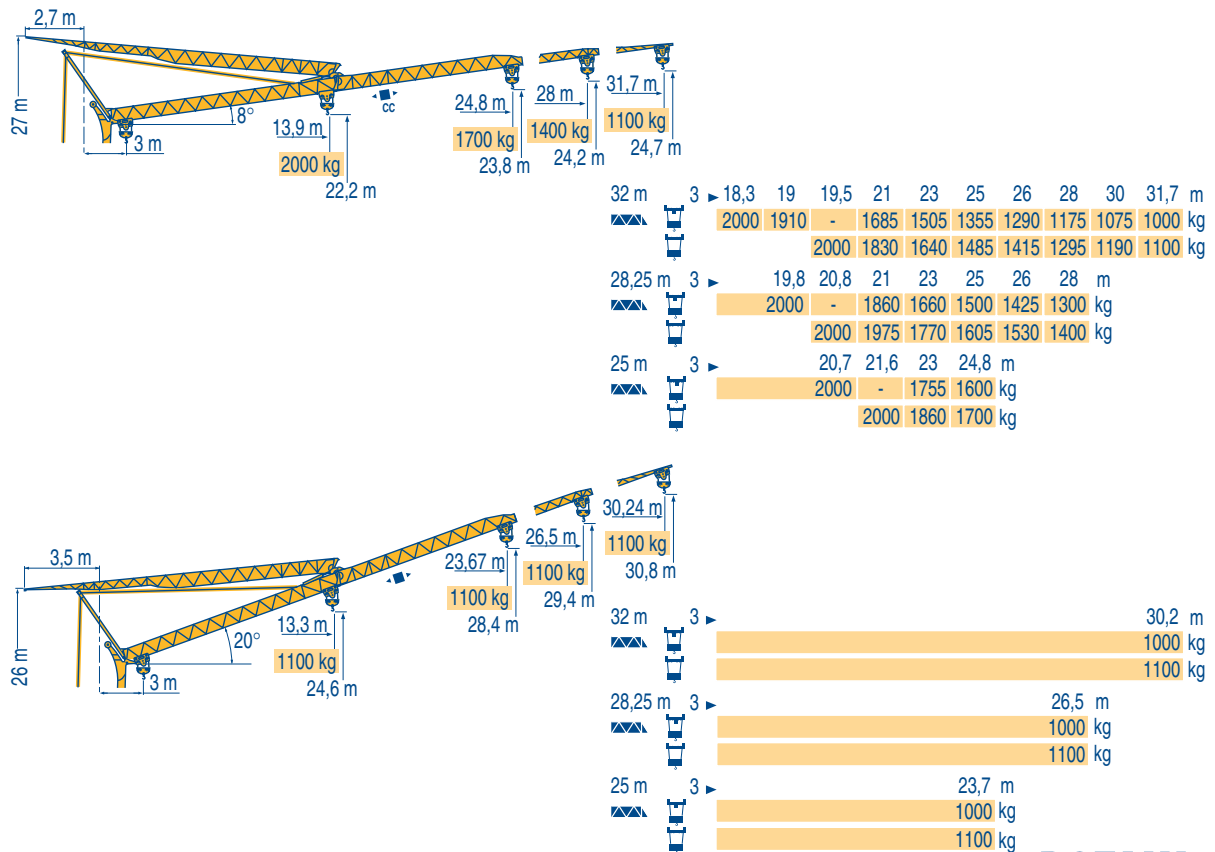
Luffing jib

Flecha izada

Braccio impennato

Lança inclinada

LXS 1



I go 36

POTAIN



F

Chariot distributeur
Chariot distributeur et courbes de charges

Réactions en service

Réactions hors service

A vide sans lest (ni train de transport) avec flèche et hauteur maximum.

D

Verfahrbare Laufkatze

Verfahrbare Laufkatze und Lastkurven

Reaktionskräfte in Betrieb

Reaktionskräfte außer Betrieb

Ohne Last, Ballast (und Transportachse), mit Maximalausleger und Maximalhöhe.

GB

Traversing trolley

Traversing trolley and load diagrams

Reactions in service

Reactions out of service

Without load, ballast (or transport axes), with maximum jib and maximum height.

E

Carro distribuidor

Carro distribuidor y curvas de cargas

Reacciones en servicio

Reacciones fuera de servicio

Sin carga, sin lastre, (ni tren de transporte), flecha y altura máxima.

I

Carrellino distributore

Carrellino distributore e curve di carico

Reazioni in servizio

Reazioni fuori servizio

A vuoto, senza zavorra (ne assali di trasporto) con braccio massimo e altezza massima.

P

Carro distribuidor

Carro distribuidor e curva de cargas








Reações em serviço

Reações fora de serviço

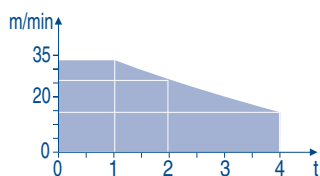
Sem carga (nem trem de transporte)- sem lastro com lança e altura máximas.

Mécanismes
Antriebe
Mechanisms
Mecanismos
Meccanismi
Mecanismos

LXS 1

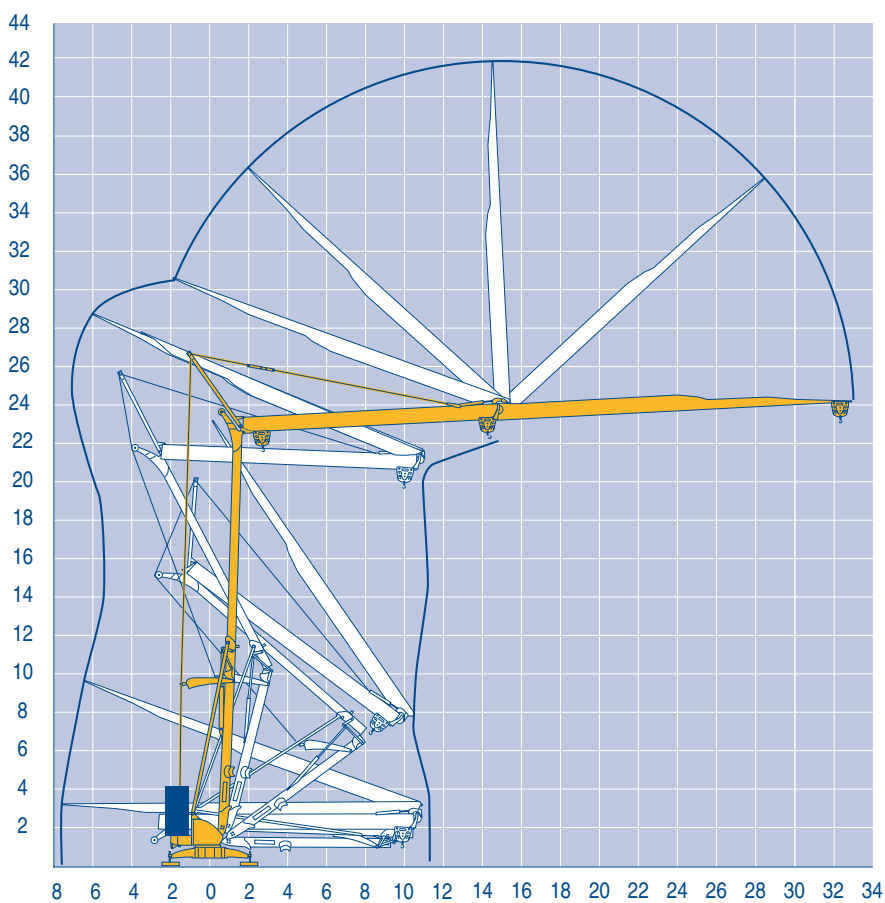
													ch - PS hp	kW
	15 LVF 10 Optima	m/min	3,6	18	30	49	66						15	11
		kg	2000	2000	2000	1100	500							
		m/min	3,6	18	30	54	66	1,8	8,9	15	27	33		
		kg	2000	2000	2000	1000	500	4000	4000	4000	2000	1000		
	3 DVF5	m/min	19 - 41										3	2,2
	RVF2-50	tr/min U/min rpm	0 → 0,8										4	3
CEI 38  IEC 38			kVA											
400 V (+6% -10%) 50 Hz			15 LVF 10 : 22 kVA					2000/14						

15 LVF 10 Optima



Montage
Montage
Erection
Montaje
Montaggio
Montagem

LXS 1



Igo 36

POTAIN 



F

Leverage
Distribution
Orientation

Conforme aux directives CEE
sur le niveau acoustique

D

Heben
Katzfahren
Schwenken

Gemäss EWG-Richtlinien für
den Schall-Leistungspegel

GB

Hoisting
Trolleying
Slewing

In compliance with the EEC
Instructions on noise level

E

Elevación
Distribución
Orientación

Conforme con las directivas
CEE sobre el nivel acústico

I

Sollevamento
Distribuzione
Rotazione

Conforme alle direttive CEE
sul livello acustico

P

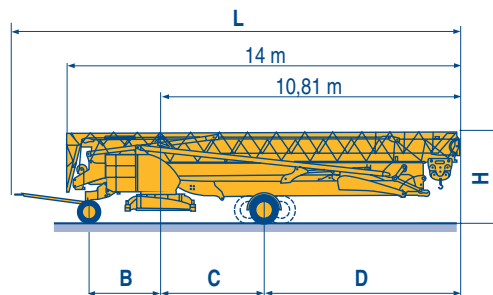
Elevação
Distribuição
Rotação

Conforme as directivas CEE
sobre o nível acústico

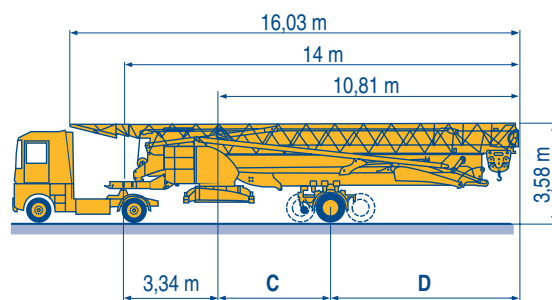
Transport
Transport
Transport
Transporte
Trasporto
Transporte

LXS 2

		L (m)	B (m)	C (m)	D (m)	H (m)
DS61/S120	○					
DS61/S125	DS61/S120	15,9	2,45	3,73	7,08	3,05/3,2
DJ80/S120	DS61/S125	15,9	2,45	3,73	7,08	3,05/3,2
DJ80/S125	DJ80/S120	15,9	2,45	4,15	6,66	3,1
DJ100/S120	DJ80/S125	15,9	2,45	4,15	6,66	3,1
DJ105/S125	DJ100/S120	16,33	2,45	4,15	6,66	3,23
DJ126M/S125	DJ105/S125	16,33	2,45	4,15	6,66	3,23
DJ126M/S215M	DJ126M/S125	16,35	2,45	4,15	6,66	3,2
	DJ126M/S215M	17,14	3,24	4,07	6,74	3,55



		C (m)	D (m)
SL122/J215M			
SL121/J135	SL122/J215M	4,07	6,74
SL121/S215M	SL121/J135	4	6,66
	SL121/S215M	4,07	6,74



	F	D	GB	E	I	P
○	Chantier	Baustelle	Site	Obra	Cantiere	Estaleiro



Document commercial non contractuel. Pour toute information technique se référer à la notice correspondante

Unverbindliches Vertriebsdokument. Für technische Informationen, siehe die entsprechenden Anweisungen.

This commercial document is not legally binding. For any technical information, please refer to the corresponding instructions.

Documento comercial no contractual. Para cualquier información técnica, ver la noticia correspondiente.

Documento commerciale non vincolante. Per tutte le informazioni tecniche fare riferimento al catalogo istruzioni

Documento comercial não contratual. Para qualquer informação técnica complementar consultar as respectivas instruções

Manitowoc
Crane CARE

POTAIN 
Manitowoc Crane Group



Americas

Tel : +1 920 683 6322
Tel : +1 717 597 8121

Europe - Middle East - Africa

Tel : +(33) 4 72 81 50 00
Tel : +(44) 191 565 6281

Asia - Pacific

Tel : +(65) 6861 7133
Fax : +(65) 6862 4142

www.manitowoccrane.com

18, rue de Charbonnières - B.P.173
69132 ECULLY Cedex - France

Tél. : (33) 4 72 18 20 20
Fax. : (33) 4 72 18 20 00
www.manitowoccrane.com www.potain.com

I go 36

Réf. 2003 48 LXS 2

Copyright.Reproduction interdite © POTAIN 2003

Réalisation HeadLines