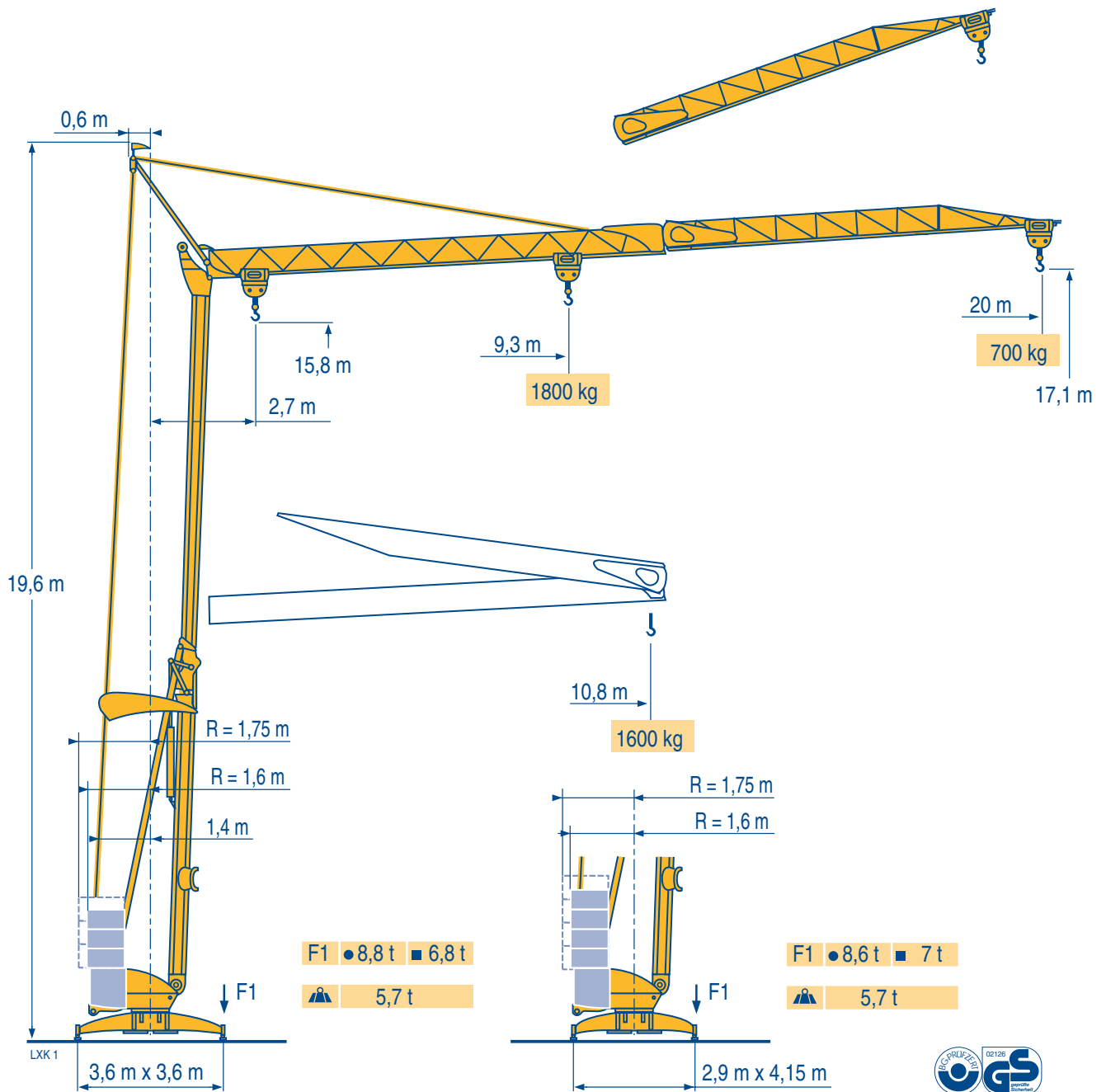


POTAIN

/go 13



CE FEM 1.001-A3

Manitowoc
Crane Group

Above. Beyond. Everywhere.™

Courbes de charges

Lastkurven

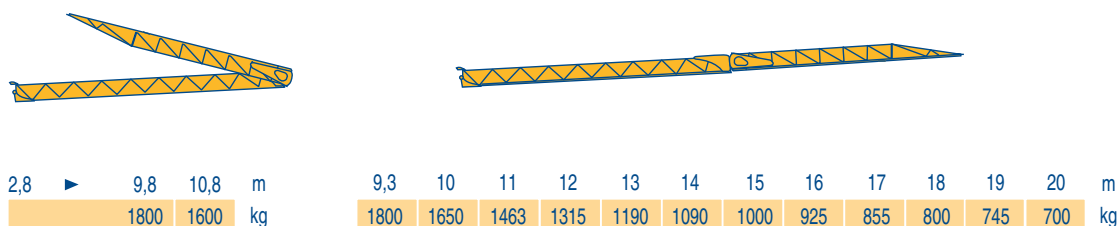
Load diagrams

Curvas de cargas

Curve di carico 20 m

Curva de cargas

LXK 1



Flèche relevée

Ausleger in Steilstellung

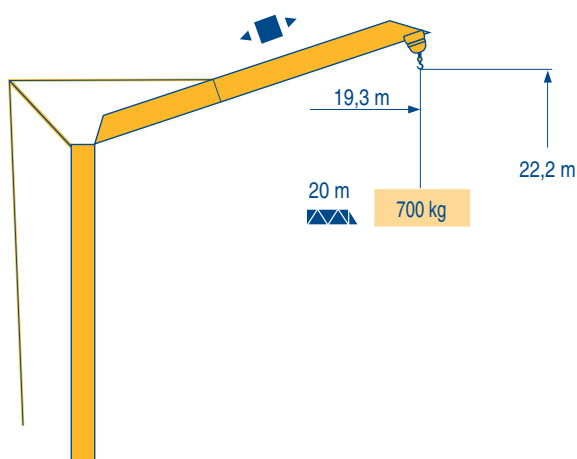
Luffing jib

Flecha izada

Braccio impennato

Lança inclinada

LXK 1



I go 13

POTAIN



F

Chariot distributeur

Réactions en service

Réactions hors service

A vide sans lest (ni train de transport) avec flèche et hauteur maximum.

D

Verfahrbare Laufkatze

Reaktionskräfte in Betrieb

Reaktionskräfte außer Betrieb

Ohne Last, Ballast (und Transportachse), mit Maximalausleger und Maximalhöhe.

GB

Traversing trolley

Reactions in service

Reactions out of service

Without load, ballast (or transport axles), with maximum jib and maximum height.

E

Carro distribuidor

Reacciones en servicio

Reacciones fuera de servicio

Sin carga, sin lastre, (ni tren de transporte), flecha y altura máxima.

I

Carrellino distributore

Reazioni in servizio

Reazioni fuori servizio

A vuoto, senza zavorra (ne assali di trasporto) con braccio massimo e altezza massima.

P

Carro distribuidor




Reacções em serviço

Reacções fora de serviço

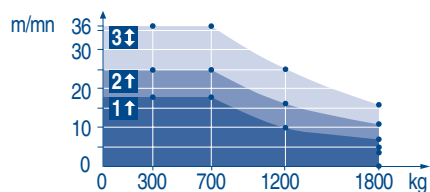
Sem carga (nem trem de transporte)- sem lastro com lança e altura máximas.

Mécanismes
Antriebe
Mechanisms
Mecanismos
Meccanismi
Mecanismos

LXK 1

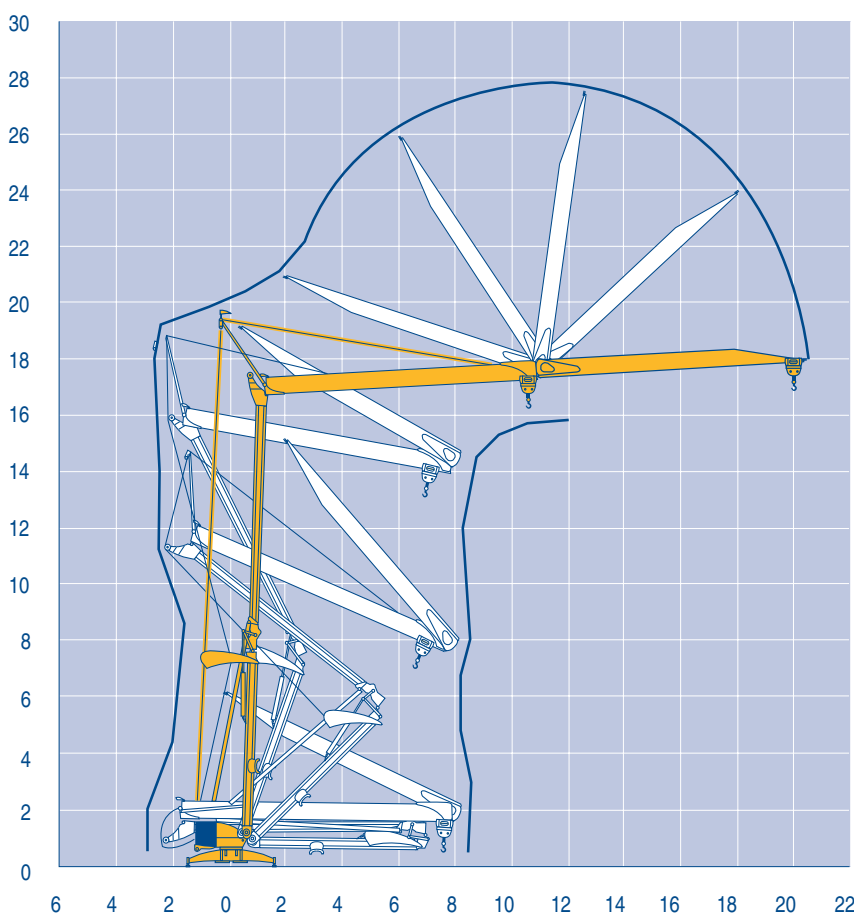
									ch - PS hp	kW
		230 V 20 A 1	m/min kg	↑ 3,5 ↓ 3,5 1800	↑ 7 ↓ 16 1800	↑ 18 ↓ 36 700			3,3	2,4
		230 V 32 A 2	m/min kg	↑ 3,5 ↓ 3,5 1800	↑ 11 ↓ 16 1800	↑ 25 ↓ 36 700			5,2	3,8
		400 V 3	m/min kg	↑ 3,5 ↓ 3,5 1800	↑ 16 ↓ 16 1800	↑ 36 ↓ 36 700			7,5	5,5
	1 DVF 4	–	m/min	14 - 28					1,5	1,1
	RVF 20	–	tr/min U/min rpm	0 → 1					1,5	1,1
CEI 38  IEC 38				kVA						
230 V(+6% -10%) 50 Hz  400 V(+6% -10%) 50 Hz				230 V 20 A : 4,6 kVA 230 V 32 A : 7,4 kVA 400 V : 11 kVA			2000/14			

8 LVF 9
Optima



Montage
Montage
Erection
Montaje
Montaggio
Montagem

LXK 1



Igo 13

POTAIN 



F

Levage
Distribution
Orientation
50 Hz Monophasé
Conforme aux directives CEE
sur le niveau acoustique

D

Heben
Katzfahren
Schwenken
50 Hz Einphasige
Gemäss EWG-Richtlinien für
den Schall-Leistungspegel

GB

Hoisting
Trolleying
Slewing
50 Hz Single phase
In compliance with the EEC
Instructions on noise level

E

Elevación
Distribución
Orientación
50 Hz Monofásica
Conforme con las directivas
CEE sobre el nivel acústico

I

Sollevamento
Distribuzione
Rotazione
50 Hz Monofase
Conforme alle direttive CEE
sul livello acustico

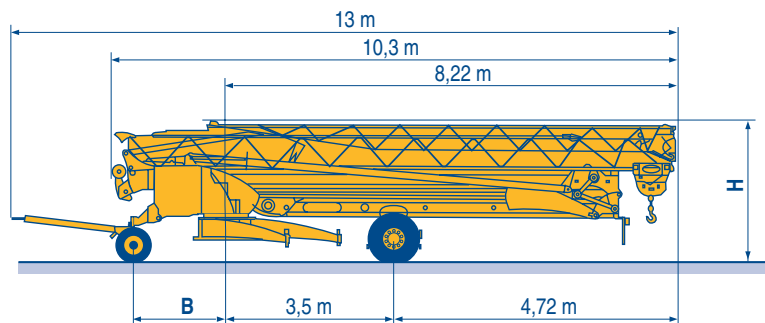
P

Elevação
Distribuição
Rotação
50 Hz monofásica
Conforme as directivas CEE
sobre o nível acústico

Transport
Transport
Transport
Transporte
Trasporto
Transporte

LXK 2

- DS51/S70 ○
- DS61/S80 ○
- DS61/S120 ○
- DS61/S125
- DS65/S65
- DJ80/S120 ○
- DJ80/S125
- DJ100/S120
- DJ105/S125
- DJ126M/S125



	B (m)	H (m)
DS51/S70	1,93	2,85/3
DS61/S80	2,03	2,85/3
DS61/S120	2,03	2,85/3
DS61/S125	2,03	2,85/3
DS65/S65	1,93	2,85/3
DJ80/S120	2,03	2,82/2,97
DJ80/S125	2,03	2,82/2,97
DJ100/S120	2,03	2,82/2,97
DJ105/S125	2,03	2,82/2,97
DJ126M/S125	2,03	3,65/3,8

○	F Chantier	D Baustelle	GB Site	E Obra	I Cantiere	P Estaleiro
---	----------------------	-----------------------	-------------------	------------------	----------------------	-----------------------



Document commercial non contractuel. Pour toute information technique se référer à la notice correspondante

Unverbindliches Vertriebsdokument. Für technische Informationen, siehe die entsprechenden Anweisungen.

This commercial document is not legally binding. For any technical information, please refer to the corresponding instructions.

Documento commercial no contractual. Para cualquier información técnica, ver la noticia correspondiente.

Documento commerciale non vincolante. Per tutte le informazioni tecniche fare riferimento al catalogo istruzioni

Documento comercial não contratual. Para qualquer informação técnica complementar consultar as respectivas instruções

Manitowoc
Crane CARE

POTAIN 
Manitowoc Crane Group



Americas

Tel: +1 920 683 6322
Tel: +1 717 597 8121

Europe - Middle East - Africa

Tel: +(33) 4 72 81 50 00
Tel: +(44) 191 565 6281

Asia - Pacific

Tel: +(65) 6861 7133
Fax: +(65) 6862 4142

www.manitowoccrane.com

18, rue de Charbonnières - B.P.173
69132 ECULLY Cedex - France

Tél. : (33) 4 72 18 20 20
Fax. : (33) 4 72 18 20 00
www.manitowoccrane.com www.potain.com

I go 13

Réf. 2003 48 LXK 2

Copyright.Reproduction interdite © POTAIN 2003

Réalisation HeadLines